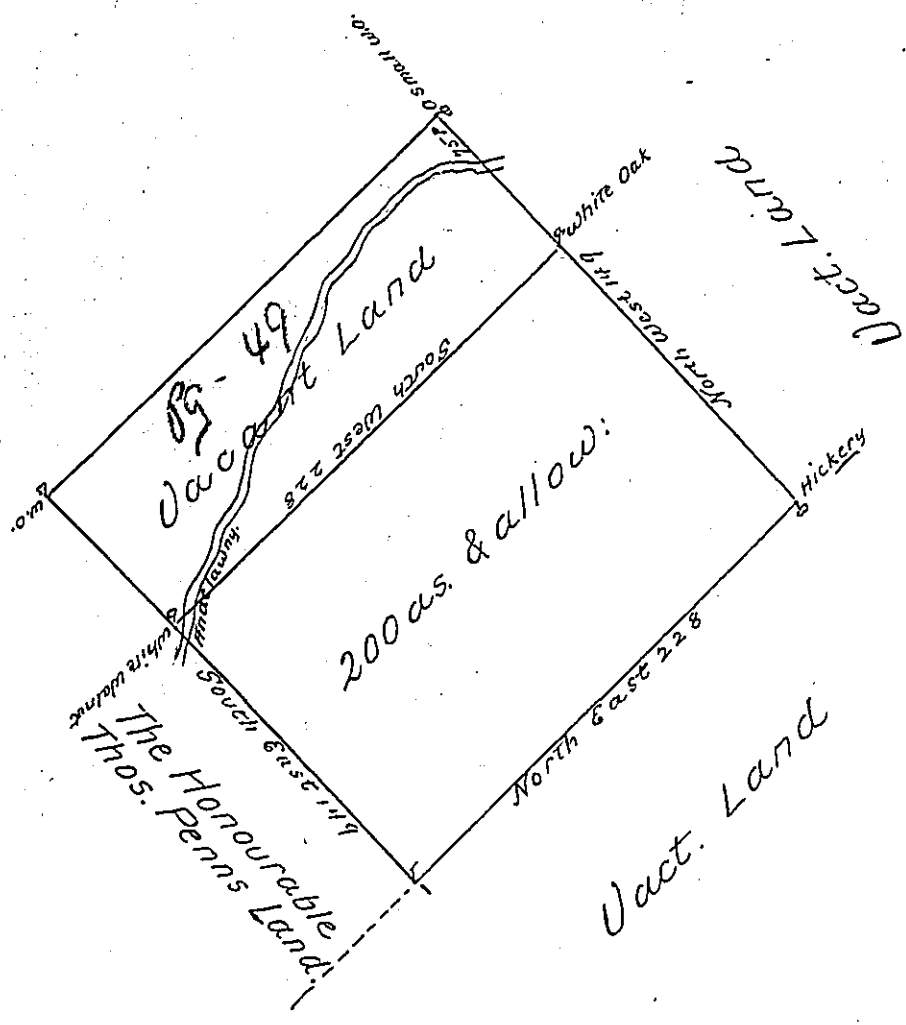


224
 228
 1792
 448
 448
 51072 (319)
 343
 1



By Virtue of a Warrant from the Proprietaries
 dated the 26th day of Feb. 1733 Surveyed to George
 Rutter the above described Tract of Land Situate on
 Andelawny Creek in the County of Philad^a Con-
 taining two Hundred acres with the usual allow-
 ance of Six pcent

Surveyed May 6, 1734 by
 Nichs. Scull

IN TESTIMONY that the above is a copy of the original remaining on file in
 the Department of Internal Affairs of Pennsylvania, made
 conformably to an Act of Assembly approved the 16th day of
 February, 1833, I have hereunto set my Hand and caused
 the Seal of said Department to be affixed at Harrisburg,
 this fifth day of November 1901

James W. Fatta
 Secretary of Internal Affairs.